



SELECT

SELECT AFRICA

GROUP OVERVIEW

September 2023



Select at a glance

SELECT'S FOOTPRINT

loan book operations in:

5 countries

17 branches

47 satellite offices & c. **465** mobile sales agents

c. **169** full time employees

c. **70k** loans

Focus on **incremental housing & education** loans

Broad loan product mix **tailored** per region

Variable cost base driving **scalability**

Highly cash generative

FINANCIAL HIGHLIGHTS at 30 JUN 2023

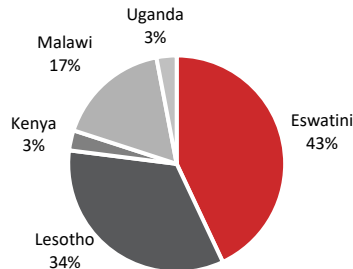
c. USD 100m gross loan book

Gross loan and advances **growth** of c. **171%** over 11 years

First strike collection rate in excess of **95%**

Loan book impairment provision of c. **3.2%** with bad debts written off at **1%**

31-Dec-22 gross loan book segmentation



PROVEN TRACK RECORD

Driven by an **experienced & committed management team** with over **24** years of **experience**

Expert technological platform for loan book origination & administration

3rd party loan administration, finance & operations reporting

Digital paperless loan management system that has significantly improved Select's **operational efficiency** and an **enhanced control environment**

Government licenses & payroll deduction codes

High standards of **corporate governance** and reporting

Eswatini's **first mixed-use development, Malkerns Square**, with 147 rental apartment units, a fully let retail shopping centre and 8 full title houses for sale or rent.

A RESPONSIBLE LENDER

Financial inclusion to under-banked market

Built-in lending mechanisms to ensure **customer affordability**

Credit life insurance embedded in loan product to customers

"BB-" Social Rating for Lesotho and Malawi operations in 2020

Long term affiliations with **leading DFI's** and **technical partners**

Significant contribution to **African capital market development**

Resilient, relevant business model supported by **technological innovation**, tested by the Covid-19 pandemic and various lock downs over 2020 and 2021

Select's operations are aligned to the UN SDG's 2, 3, 4, 6, 7, 8, 9, 11

Introduction

Select Africa Finance Limited (“Select”, “SEFL” or “the Group”) is a retail financial services group focusing primarily on the extension of **retail unsecured, incremental housing microfinance, education and consumer finance loans**, ranging from three to eighty-four months. The Group commenced operations in August 1999, with the opening of its first branch in Mbabane, Eswatini, followed by the establishment of subsequent operations. Today, the Group has operations in **Eswatini, Lesotho, Kenya, Malawi and Uganda**. The Group consolidation is at SEFL, incorporated in Mauritius, and the ultimate holding company is Select Africa Limited (“SELA”), incorporated in the Isle of Man.

Microfinance is broadly the provision of small-scale financial loan products to lower-income individuals. **Select’s typical customer** is employed, yet unable to access personal or housing finance through traditional banking channels due to the banks’ aversion to perceived higher risk customers, and the inability to mortgage or attach properties as security across many countries in Africa. The Group’s primary customer base tends strongly towards **public sector employees**, typically being the largest and most stable formally employed base in markets across Africa, and quite resilient to economic cycles.

The majority of **loan repayments** are made via payroll **deductions at source**, with payroll deduction agreements with government institutions in place, allowing for consistently strong collection rates.

With **over 24 years of experience in general and housing microfinance in Africa**, the Group understands that customers in each market have very different needs and preferences in their borrowings. As a result, the Group **has customised a broad product offering** that is designed specifically to meet customer preferences and offer new product innovation.

Our country executive management are supported by **Select Advisors (Pty) Ltd**, a senior Group operations and advisory team based in Johannesburg, South Africa. Whilst Select operates as an independent business silo, it benefits from the infrastructure of its major shareholder, **African Alliance (“AA”)**, including a well-defined and robust corporate governance framework, centralised IT, statutory, regulatory, legal and HR functions. AA is a premier investment banking and investment holding group operating across Sub-Saharan Africa.

Select’s operations are strengthened by an **administration hub**, Pivot Limited (“Pivot”), located in Mauritius. Established in 2008, Pivot is responsible for loan book management, workflow administration, document management and accounting, providing an enhanced control environment through segregation of duties.

Select has built long-term affiliations with **leading DFI’s, impact investors and technical partners** in the incremental housing and microfinance arena.

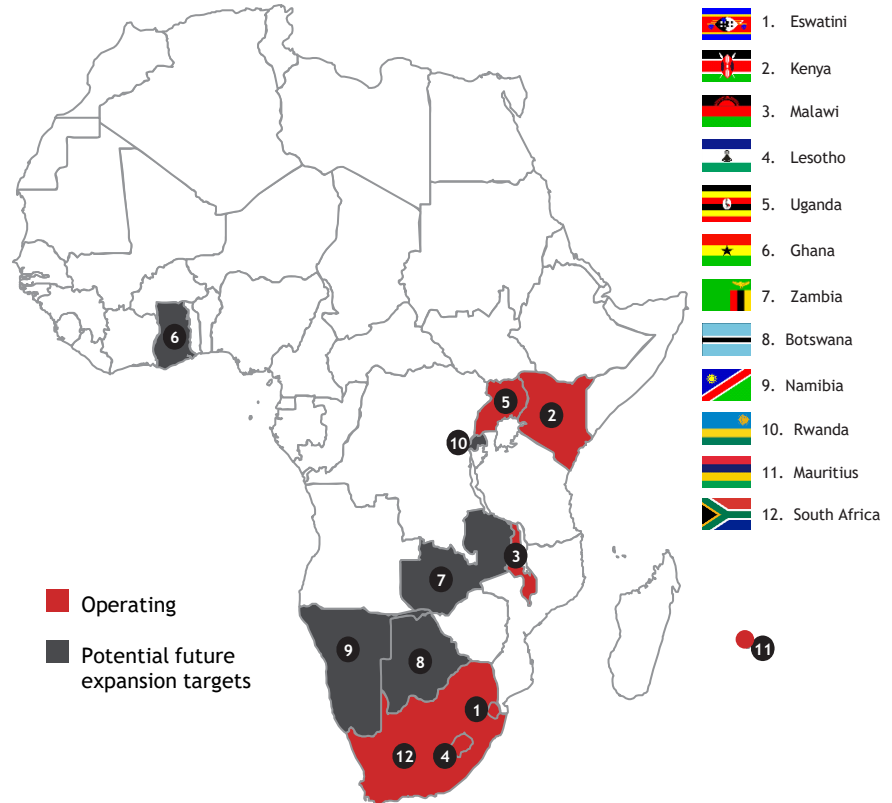
Select's African footprint

Select's current operations are in five countries across the African continent, and include **Eswatini, Lesotho, Kenya, Malawi and Uganda**, whilst the administration and advisory hubs are located in **South Africa and Mauritius**. Select is continuously assessing the viability of other jurisdictions in Sub-Saharan Africa, as illustrated.

The African continent provides a **compelling investment case** for Select. Compared to other world regions, Africa:

- has some of the highest population growth rates (notwithstanding current economic pressures*);
- is experiencing rapid urbanisation;
- has one of the largest housing deficits;
- has a rapidly rising labour force;
- has a large civil servant population; and
- has rising GDP per capita.

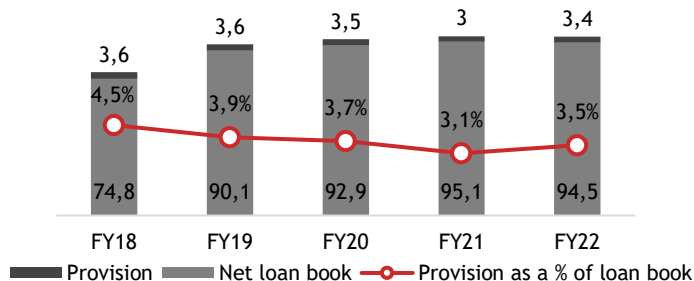
Consequently, at Select we constantly monitor the relevant economic and political indicators in our target geographies to ensure that we are well-placed to **provide the right products, at the right time, for our target market.**



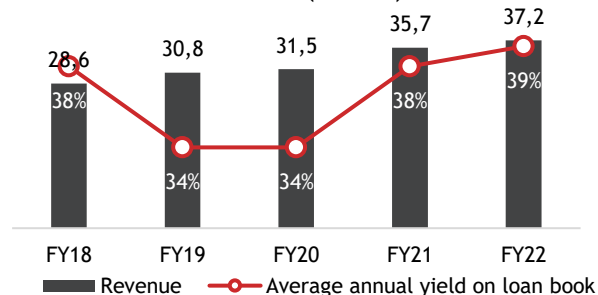
* Including Covid-19 pandemic uncertainty, global economic pressure, political uncertainty, and the slowdown in the Chinese economy.

Group financial review

Loans and advances (USD 'm)



Revenue (USD 'm)



- Despite increased disbursements and lower impairment provision, FY18 loan book remained flat due to negative impact on USD conversion of local currency loans.
- Uptick in FY19 due to increased disbursements, a lower impairment provision (better collections) and positive USD currency conversion.
- Despite a difficult global trading environment with the Covid-19 pandemic and lock down restrictions, stable but slight growth in the loan book in FY20 and FY21.
- Despite increased disbursements and stronger collections in Lesotho and Malawi, FY22 loan book remained flat due to the negative impact on USD conversion of local currency loans. Lower disbursements and competitor settlements from a reconfiguration of loan distribution channel in Kenya also contributed.
- Continued uptick in FY19 due to higher revenue from a larger loan book with increased disbursements across all jurisdictions, despite a weaker average USD exchange rate.
- Despite a difficult global trading environment with the Covid-19 pandemic and lock down restrictions, stable but slight growth in revenue in FY20 and FY21, evidencing Select's relevance in local markets and resilient business model.
- Uptick in FY22 revenue as a result of larger loan book with increased disbursements in Lesotho and Malawi converted at a stronger average USD exchange rate, despite customer attrition in Kenya with the new loan distribution channel.

Incremental housing finance

Historically, the **penetration rate of financial services** in particular housing finance in African markets, is hampered by restrictive credit policies from retail banks and financial institutions, which has inhibited the economic development of lower income individuals. **Housing affordability** is a function of **household income, house prices and financing terms**.

Select's **incremental housing finance** and **self-build solutions**, coupled with the right technical assistance, present a viable alternative to conventional mortgages. This model entails the extension of **multiple, successive microloans** to customers who intend on building or renovating their homes, with each loan granted on the basis of the **customer's affordability**. A further loan is granted when the preceding loan is repaid, or as the customer's loan affordability improves, thus allowing more people access to housing finance. The incremental home loan's staggered design reduces the monthly instalments and in turn the total interest paid.

Select is fundamentally committed to responsible lending practices where customers borrow on terms which they can afford.

The table below summarises and compares the two financing structures. Even with an all-in interest rate two times greater than the conventional mortgage rate, the incremental home loan is still more affordable.

Illustrative example	Conventional mortgage	Incremental housing
Total capital borrowed	USD 10,000	USD 10,000
Annual interest rate	25%	50%
Loan structure	Single 10-year loan of USD 10,000	Five back-to-back two year loans totalling USD 10,000
Monthly instalment	USD 228	USD 133
Total interest charge	USD 17,299	USD 6,011



Funding

As a non-deposit-taking MFI, **Select** raises **wholesale funding** that it on-lends to customers. Our **current funding structure is diverse**, and includes:

- Shareholders' equity;
- A well established listed Medium Term Note ("MTN") Programme on the Eswatini Stock Exchange ("ESE") and an inaugural listed MTN on the Maseru Securities Market ("MSM");
- An unlisted MTN Programme in Malawi and Lesotho;
- Funding from leading DFI's and Impact Investors, including
 - Soros Economic Development Fund ("SEDF");
 - African Local Currency Bond ("ALCB") Fund;
 - Blue Orchard Impact Investment Managers ("BO");
 - Mergence Investment Managers ("MIM"); and
 - Enabling Qapital ("EMF");
- Other debt instruments including Promissory Notes;
- Debt investments from 3rd party corporates, institutional investors, and sovereign wealth funds;
- Intercompany funding; and
- Overdraft facilities from local banks.

Our **future funding initiatives** include:

- Listing an asset-backed MTN in Eswatini for the Malkerns Square development; and
- Securing investment from other leading impact investors and DFI's.



We seek to raise capital at both a Group and country level. Seed capital is raised at a Group level for expansion into new geographies and to grow new operations. Once the new business has gained sufficient scale, achieved sustained growth in the loan book asset, and built a track record of profitability, we seek to raise local funding in local capital markets of established jurisdictions. This has the advantage of:

- providing funding in local currency (cheaper cost of funding);
- Avoiding foreign exchange currency risks associated with borrowing and lending in different currencies; and
- building a stand-alone business.

Select has successfully implemented this funding model in Eswatini, Malawi, and Lesotho.

Our current partners



Established in 1997, Soros Economic Development Fund (“SEDF”) is a non-profit private foundation, founded by investor and philanthropist George Soros. SEDF promotes economic opportunities and access to affordable and essential goods and services for under-served populations in less developed countries, with a focus on financial inclusion. In January 2011 Select Malawi entered into a funding agreement with SEDF. Subsequently, SEDF extended further funding at a Group level for deployment into housing finance in other jurisdictions across the Group in September 2016.



The African Local Currency Bond (“ALCB”) Fund was initiated by KfW Development Bank and the German Federal Ministry for Economic Cooperation and Development (“BMZ”) in 2012, with additional investment from the International Finance Corporation (“IFC”), FSD Africa, and BMZ. In 2017, Select concluded investment from the ALCB Fund in our Malawi and Lesotho businesses, with plans for further investment in other geographies over time.



Blue Orchard (“BO”) was founded in 2001, initiated by the United Nations as the first commercial manager of microfinance investments in emerging and frontier markets. BO’s Regional Educational Fund for Africa (“REFFA”) is designed to increase equal access to and to enhance education quality across the continent. REFFA was initiated by KfW in 2012 and is funded by BMZ, CDC and OFID. In December 2019, Select concluded investment from BO REFFA in our Eswatini business, with additional investment in 2021, 2022 and 2023.



Select’s fully automated, paperless loan origination and management system was developed by MIP. The system has substantially improved operational efficiency with quicker loan disbursement turn-around, improved customer experience, enhanced internal controls, and reduced operational costs.



Microfinanza Srl is an independent rating organization with deep knowledge of the access to finance and financial inclusion challenges in Africa, Asia, Latam. MFR has carried out several assignments worldwide and has partnered with more than 100 organizations. MFR independently assessed Select Malawi and Lesana’s social performance management and client protection systems in 2020, resulting in an inaugural Social Rating of “BB-” satisfactory alignment.



Select is a member of the African Union of Housing Finance (“AUHF”), which currently has 48 member institutions. AUHF is a member-based association of mortgage banks, building societies, housing corporations and other organisations involved in the mobilisation of funds for shelter and housing on the African continent.



Excalibur is the leading software system servicing the debt collection industry for over 10 years, with over 11k active users and proven its stability to handle large volumes and multiple workflows.

Corporate governance

Select is committed to the principles of sound corporate governance to safeguard the interests of the Group, its shareholders, and its investors. Management and the board believe that sound corporate governance principles and processes are fundamental to delivering sustainable growth.

The Group complies, in all material respects, with best practice corporate governance principles set out in King III. SBC Limited is also listed on the Eswatini Stock Exchange, and therefore complies with the listing requirements. Several committees have been established to assist the board of directors in overseeing various areas of governance.

This includes the following monthly committee meetings:

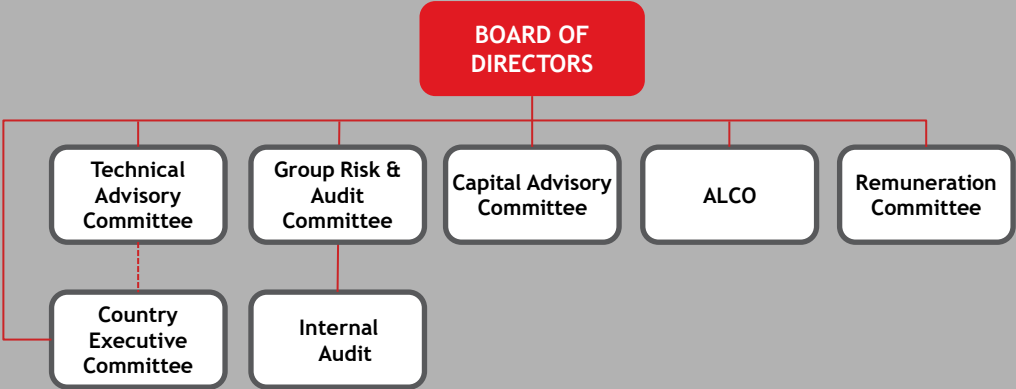
Country Executive Committee: day-to-day business operations are discussed at an individual country level;

Technical Advisory Committee: strategic, technical, advisory and operational matters discussed at a Group level; and

ALCO: Asset and Liability management for each operation and on a Group level to determine future funding needs.

Ad-hoc meetings are also held, and include:

Capital Advisory Committee: is constituted to approve material investments and new products in advance.



Group prospects

Organic growth

- Growth in Select's loan book through innovative and competitive products, with customer service at the core and remaining agile in satisfying our customer requirements;
- Malkerns Square - an iconic, environmentally responsible, and resource-efficient lifestyle property development in Eswatini, with phase 2 development of an additional c.400 apartment units on a lease to own model and a retail shopping centre with gross lettable area of 6,995 sqm.
- Expansion of Select's country presence throughout the rest of the African continent, including current expansion targets in Botswana and Namibia.

Acquisitions

- Identify and take up investment opportunities in the retail financial services sector across the African continent, with the aim to grow these investments into sustainable businesses.

Brand identity

- Respected and renowned thought leaders in housing finance;
- Strong brand identity as Africa's premier housing micro-financier;
- Expansion of funding base through structured debt programmes and relationships with DFI's, impact investors and local institutional investors;
- Establish and maintain technical partner relationships.



Select has an established infrastructure platform, a proven track record coupled with experienced management, and a robust corporate governance structure. Select has a defined plan to apply this expertise to establish businesses in other sub-Saharan African countries, and to establish new product offerings. This expertise, coupled with the potential of the African continent, provide the impetus for Select to accomplish its growth objectives.

Contact us



Sean O'Sullivan
Group Chief Executive Officer
Tel no: +27 11 214 8344
Email: osullivans@selectafrica.net



Wayne Faulds
Group Chief Executive Officer, Retail
Tel no: +27 11 214 8484
Email: faulds@selectafrica.net

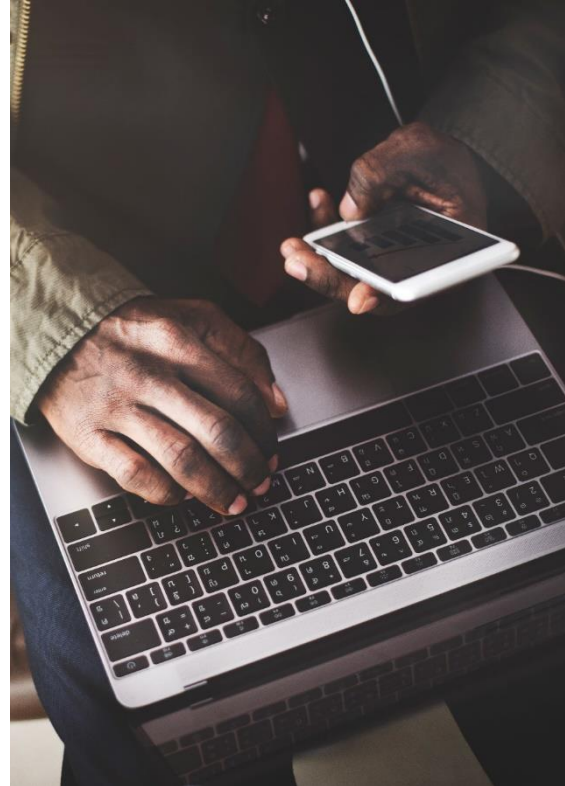


Shane Leas
Group Chief Financial Officer
Tel no: +27 11 214 8448
Email: leass@selectafrica.net



Anusha Naidu
Group Corporate Finance
Tel no: +27 11 214 8462
Email: naidua@selectafrica.net

www.selectafrica.net



Disclaimer

Although information in this document has been obtained from sources believed to be reliable, Select does not represent or warrant its accuracy, and such information may be incomplete or condensed. All estimates and opinions in this document constitute our judgement as of the date of the document and may be subject to change without notice. Select will not be held liable for the consequences of any reliance placed upon any opinion or statement contained herein or for any omission. This document is for the private use of Select and may not be reproduced or disclosed, in whole or in part, to any other person without our prior written permission.

Investment products may be subject to investment risks, which include but are not limited to: currency, financial business and market risks, which may cause fluctuations in value and where applicable possible loss of principal invested. Investors should note that past performance does not guarantee or predict future performance. The investments mentioned in this document may not be suitable for all recipients and one should seek professional advice if one may have any doubts. Investors should obtain legal and/or taxation advice suitable to their particular circumstances.

The manner in which this document is distributed may be restricted by regulation or law in certain countries and persons who come into possession of this document should inform themselves of and observe any restrictions. This document does not constitute an offer to sell, solicit or offer to buy any investment product, and is not intended to be a final representation of the terms and conditions of any product.

